



SCHOOL PROSPECTUS

NURSERY TO GRADE XII

ADMISSIONS OPEN





Datta Meghe World Academy is established and managed by Smt. Radhikabai Meghe Memorial Shikshan Sanstha. The school is affiliated to CBSE Board, Delhi with affiliation no. 1130337. The medium of instruction is English. For over three decades, Shri Dattaji Meghe and his team of visionary educators have filled the lives and hearts of every student who has walked through the gates of our prestigious institutions. At Datta Meghe World Academy, we aim at empowering each student to think big and soar high above their dreams and goals. We strive hard to bring our students closer to their dreams, help them realize their ambitions and guide them tirelessly with modern, contemporary education and learning facilities.



School Philosophy

At Datta Meghe World Academy (DMWA), we are bringing the much-needed upgrade to traditional education by striking a perfect balance between intellect, physique and emotions for your child's overall development; just to shape your little ones into leaders of tomorrow!

Our school endeavours to provide a responsive and dynamic learning environment to its students; intricately designed keeping the well-being and welfare of students at its core, to develop excellence in academics, extra-curricular and behaviour. Over 2000 students acquire this knowledge and skills to succeed as global citizens in a rapidly changing world.

Our Mission

Providing a conducive learning environment for all our students, which encourages children to bring out the best in themselves and enables their holistic development through the joy and fulfilment of learning, enduring values and the celebration of diversity.

Our Vision

Nurturing young minds to be global leaders.



Our Objectives

- To offer educational programmes that not only embrace academics, but also support the physical, social, emotional and moral development of children.
- To provide state-of-the-art facilities, amenities, technologies and infrastructure to optimise teaching pedagogies and learning outcomes.
- To inculcate the values of compassion, gratitude, courtesy, empathy and respect towards others and the environment in children.
- To provide a conducive, safe and secure environment in which each child can dare to dream, achieve excellence, enjoy learning, and become a continuous learner for life.
- To make children aware and appreciative of their history, culture and traditions, whilst being open to other cultures and alternative views of the world.
- To foster international mindedness through a local and global dimension in the curriculum.

Shri Dattaji Meghe

Director

From humble beginnings to Member of Parliament, life has been a tough, arduous journey for Shri Dattaji Meghe. For almost 4 decades, he dedicated his life to the welfare of people. His commitment to improve social standards began with a dream of educating each and every child. What began as a relatively small educational institute, almost 3 decades ago, is now one of the most outstanding educational empires that imparts knowledge in almost every discipline of life. Dattaji Meghe Educational Trust has established 27+ institutions, right from pre-primary to postgraduate levels, covering various faculties like Medical Sciences, Pharmacy, Engineering, Social Science, Commerce, Science, Physical Education and Performing Arts.

Shri Dattaji Meghe insists on uncompromising quality of education, disciplined performance and welfare of students and staff members.

His pursuit of academic excellence led him to the founding of 'Smt. Radhikabai Meghe Memorial Shikshan Sanstha' and many other prestigious institutes in the country. He serves as the Founder Chancellor of Datta Meghe Institute of Medical Sciences and University. The schools are well equipped with laboratories, spacious libraries, quality playgrounds, canteen and transportation amenities. As Shri Dattaji Meghe moves forward, he hopes that someday soon, his students too, will be adding glory to the vibrant and incredible culture of India.

"The purpose of education is not creating solutions, but creating movement in education in which people develop their own solutions with external support based on the personalized curriculum."

- Ken Robinson



Mrs. Reema Bhasin

Trustee

Founded in 2011-12, Datta Meghe World Academy has been spreading its wings all across the varied dimensions of holistic development of students and catering to the needs of individual differences. Our school showcases a unique blend of a world-class institution and seasoned intellectuals that form our core faculty. We provide extensive instruction to the young minds and offer a unique style of training which is geared to maximum hands-on experience.

It's the way you mould the artifact that determines its value in the future!



Mr. Rajeev Kumar

Principal

DMWA strives to focus beyond the academic content to promote creativity and innovation, critical thinking and problem solving, communication and collaborative skills as essential ingredients to prepare students for 21st century curriculum with emphasis on interdisciplinary themes of global awareness, finance, economics, health and environmental literacy, business and entrepreneurial literacy. I would like to thank each parent and family that encourages their child to do their very best at the school by actively learning and showing respect in their behavior and choices.

Together, our investment of time with our children will pay great dividends!



School Hours

Sr. No.	Grades	Working days for students	Timings
1	Nursery	Monday to Friday & alternate Saturday	08:45 am to 12:45 pm
2	Jr. & Sr. Kg	Monday to Friday & alternate Saturday	08:45 am to 12:45 pm
3	Grade I to V	Monday to Friday & alternate Saturday	12:50 pm to 05:10 pm
4	Grade VI to X	Monday to Friday & alternate Saturday	07:00 am to 12:40 pm
5	Grade XI to XII	Monday to Friday & alternate Saturday	07:00 am to 12:50 pm

Institutional Framework

DMWA is a well-equipped institution keeping up with an inlay of latest amenities and needs for optimal utility. Our interiors showcase our aesthetic sense that aims to form a smooth, comfortable and productive environment for overall development of students.





“

★ *Teaching is a very noble profession that shapes the character, calibre and future of an individual. If the people remember me as a good teacher, that will be the biggest honour for me.*

- Dr. A. P. J. Abdul Kalam



Language Lab

We strongly believe that practical learning experiences are much more effective than a traditional classroom approach. The main focus through our state-of-the-art Language Lab is to enhance the capabilities of students by allowing a higher degree of immersion and attention to lingual diversity. Students are encouraged to participate in language-learning exercises and various activities through board games and charts, thereby facilitating communication and interaction.

Math Lab

At our sophisticated Math Lab facility, students learn and understand mathematical fundamentals through informal explorations. The lab works as an interactive space for students to gain practical knowledge going beyond the curriculum's limits and hone their problem-solving capabilities. Numerous examples and hints are used to guide a student through challenging mathematical problems. We encourage students to identify the origin of mathematical concepts and decode them through demonstrations and activities.



Computer Lab

Computer Labs at our school constitute of latest technology and high-tech devices which complement our classroom learning well. Science, Technology, Engineering and Math (STEM) education is an area of keen interest to our management owing to the impact it has on our society. Being "digital natives", students act responsibly while they enjoy the process of learning and creating digital bits that will see them again in their workplaces of tomorrow.



Biology Lab

The Biology Lab aims to nurture positive learning experiences for students by developing manual dexterity in using tools and equipment with an interactive setting. The students experience the pleasure of discovery and development of their psycho-motor skills thereby strengthening theoretical knowledge. Our lab is equipped with different models, graphics and various types of equipment to perform and understand a wide spectrum of scientific experiments.

Chemistry Lab

We strive to provide new methodologies and advanced equipment to explain how scientific knowledge may be used in daily life. Our Chemistry Lab is a perfect space for safely-instructed and guided experiments by teachers with several years of experience. Classroom teaching is combined with adequate laboratory experiments to create deep understanding and higher-order thinking between students.



Physics Lab

Effective teaching and learning of physics at our school involves a perpetual state of show-and-tell, which promotes the ability to recognize those questions that can be investigated through experiment and to plan, carry out, evaluate, and report on such experiments. Inference and reasoning, ability to rationally defend conclusions and predictions, effective and valued participation with peers and articulate reporting of observations, conclusions and predictions are the key takeaways.





Drama Room

At our state-of-the-art Drama Room facility, the interventions work as a social ground for students to develop team-building skills, cooperation, confidence, tolerance, empathy, concentration and overall communication skills. We encourage students to indulge in interactive sessions to develop emotional and physical development. Development of such emotional intelligence is critical for preparing students for future challenges.

Music Room

A contemporary setting like ours is important for all the students to reinforce brain development, grow human connection and relieve stress. While it is a known fact that listening to music enhances reading comprehension abilities in children; it is also the master of various other traits like discipline, harmony, practice and team work. One can also choose to learn and play musical instruments like Tabla, Harmonium, Drums, Flute, Guitar and Keyboard among others.



Art Room

Our fully-loaded Art Room becomes a vehicle to help the children work in a creative yet safe environment. We focus on using art as a tool to develop social skills, fine motor skills, creativity and innovation. Visual art teaches learners about colour, layout, design, perspective and balance thereby boosting critical thinking. On our journey to enable the next generation of Da Vinci's and MF Hussain's of the world, this is the perfect launchpad one can ask for



Splash Pad

Who doesn't enjoy a rainy dance or a splash pad? Besides it being the perfect way for kids to beat the summer heat, it gives them an opportunity to interact with other kids while being in the common area. In their early years, this fostering of physical development and sensory stimulation through tactile interactions with water sprays, streams and jets is essential to nurture what we know as public behaviour and personal care.



Library

The heart of our school's academic activities lies at the well-stocked Library – a vast setting where the students enrich knowledge and gain access to various authors and latest publications. It is a comfortable zone to spend some leisure time in the company of the best literary resources, also promoting individual and group learning besides helping in developing vocabulary. The teaching and learning resources have proven to be a catalyst for slow learners.



Canteen

At Datta Meghe World Academy, proper nourishment and the whole-meal approach is a part of our active curriculum. Trained dieticians visit the Canteen regularly to monitor the special dietary requirements of children and treat their needs delicately. It is a boon for working parents, who despite all efforts, do not get the time to prepare piping hot, delicious and nutritious food for their children daily. Lunch time is the perfect moment to relax, establish relationships and socialize while also embracing table manners and correct use of cutlery.

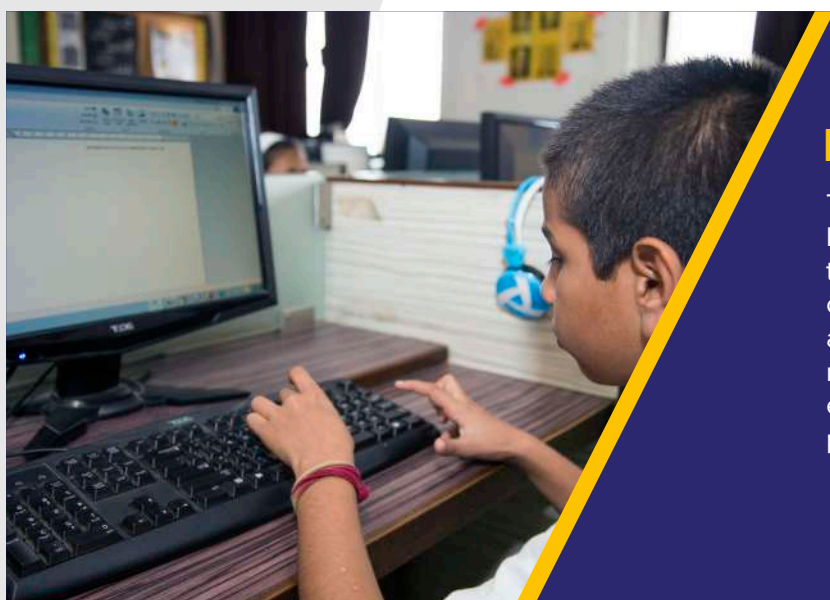


French Class

Connaissez-vous le français? You might face some difficulty in answering this question but our students don't. In a bid to enhance overall cognitive skills and promote linguistic diversity, we conduct French classes as a part of our curriculum. Not only does this increase their educational opportunity abroad, but also paves a gateway to incomparable cultural universe. Learning an international language in school is a progressive career asset and an opportunity in developing international relations.

Transport Facility

We are committed to provide safe transportation options for students in compliance with all the government regulations. Our fleet of 25+ school buses are well-equipped with CCTV cameras covering the areas of Navi Mumbai, Thane and Mumbai with multiple pickup and drop points. The students are accompanied by reliable bus staff at all times who treat them with utmost care and respect.



Digital Classrooms

Technology is not just a subject – it is a way of learning and a cooperative intellectual enterprise today. We leverage technology as an integral part of bringing together the learners, teachers, parents and the educational community. Immersive content material and suitable resources integrate into our ever-evolving curriculum with experiential learning practices.



SUPW

Socially Useful Productive Work has been described as a purposive, meaningful, manual work that is useful to the community. At DMWA, we guide students to practice and perform manual work independently and collectively to be a supporting part of the community. Our teachers instill social values like self-reliance, dignity of labour, tolerance, co-operation, sympathy, and helpfulness.

Life Skills

According to World Health Organization (WHO) Life-Skills are “abilities for adaptive and positive behaviour that enable individuals to deal effectively with the demands and challenges of everyday life”. At Datta Meghe World Academy, we transform, motivate, nurture students and develop them into an active and productive member in their community. We encourage them to accomplish their ambitions and be successful in the future. It is our duty to help students live a high potential life.



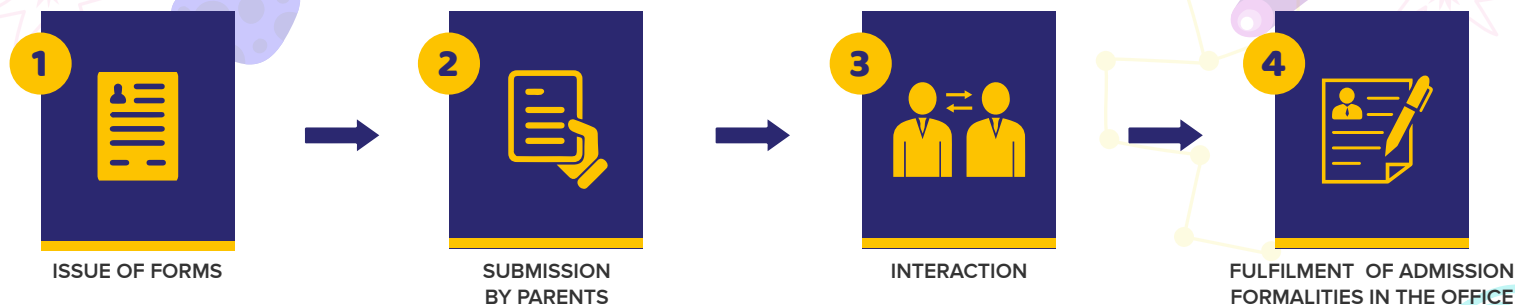
Counsellor's Hub

At DMWA, students are given proper guidance to deal with psychological problems to avoid impact on their studies. Various sessions are held so that the students are able to develop problem-solving skills which help them deal with particular issues surrounding their lives. Our faculty insists on having counselling sessions with the students to bridge the gap between students and the school administration.



Admission Process

Admission will be granted on a first-come-first-served basis, subject to availability of seats in the desired class. The registration of admission can be done through e-mail or by calling the school office between 9:00 am and 4:00 pm on working days.



Admission Criteria

1. The student should have completed the previous grade successfully.
2. The following documents should be brought at the time of admission (Grade I to IX):
 - Birth Certificate (Original) / School Leaving Certificate from the previous school (Verified by a competent authority)
 - Marks statement of previous year and current year in which the child is studying
 - Address proof (Electricity bill / Telephone bill / Rent Agreement)
 - Physical Fitness Certificate from a competent doctor
 - Aadhar Card
 - 2 Passport size photographs

Grade XI & XII is a two year course

In addition to compulsory language of English, students will have the opportunity to choose four electives from the following subjects: Physics, Chemistry, Biology, Mathematics, Business Studies, Accountancy, Economics, Informatic Practices, Web Application, Applied Mathematics, Mass Media Studies, Financial Markets Management (FMM), Legal Studies, Early Childhood Care & Education (ECCEd), Political Science, Sociology, Psychology, History and Data Science.

Selection of subjects should be done wisely in conformity to students' interest and potential. Subjects once chosen in Grade XI shall only be continued in Grade XII.

Admission will be done on the basis of performance in Grade X Board Exams of CBSE or equivalent.

Documents required:

- Original School Leaving Certificate / T. C. Issued by Principal of the last school attended
- Self-attested copy of Grade X Board Exam Marksheet
- Copy of Aadhar Card
- Passport size photograph
- Original Migration Certificate

Information regarding books and uniform will be given on a later date through a notification from the school. The fee counter will remain open from 10:00 am to 2:00 pm on all working days. Kindly note, issue of form does not guarantee admission.



Bus Rules

Terms and Conditions for Bus Facility

1. The school provides Bus Services on hire basis to facilitate the transport needs of the students coming from far away areas to get quality education. Every step has been taken to ensure safety and security of the students on board. However, under no circumstances, the school authorities shall be responsible for any mishap / mechanical failure.
2. For registration, bus fees shall be payable for twelve months.
3. In case of cancellation of bus facility for whatsoever reason, bus fee shall not be refunded.
4. In case of any mechanical failure, alternate arrangements shall be made in due course of time. Parents have to keep patience.
5. Bus Staff (Driver / Cleaner) and lady attendant should be treated cordially. Parents are requested not to board the bus under any circumstances. In case of regular delay in arrival / departure or for other transport related problems, communication in writing should be sent to Transport In-charge. Such communication can also be sent through emails (school e-mail address is enquiry@dmworldacademy.edu.in) giving full particulars of the Bus No., Route No., Stop's Name and Child's Name. No direct communication in these matters with the bus staff should be made.
6. Steps shall be taken to ensure punctuality during arrival / departure of the buses at respective stops. However, for reasons beyond one's control the school shall not be responsible for the delay.
7. Students are advised to reach to their respective stops at least 5 minutes before the scheduled time to avoid any inconvenience. In case the bus leaves the stop, the parents have to make their own arrangements to drop their wards at the school and in such cases, necessary information in writing regarding the arrival of the child at the school should be given to Security Supervisor at Gate / Transport In-charge.
8. Safety and security of the children during travelling are our concerns. The children (especially of Pre-Primary section and Primary section) shall be brought back to school if the parents / representatives are not found present at the stops. In such cases, parents have to pick up their wards from the school through their own arrangements.
9. Authority-cum-information letter with full details regarding the representative authorized to pick up the child from the school / stop should be submitted to the school. It is in interest of your child's safety.
10. While deciding the routes, steps have been taken to cover maximum area / pickup points. Therefore, the buses will ply on the listed routes only. No request shall be made for deviating the buses from existing routes.
11. Change of address / mobile number with definite proof should be intimated immediately.
12. Child should carry the I-Card every day to avoid any inconvenience.
13. Management reserves the right to change the bus fee structure during the session depending on the hike in diesel and/or petroleum products.
14. Bus facility shall be withdrawn immediately in case of:
 - a) Breach of these Terms and Conditions
 - b) Non-payment of fee on scheduled time and/or involvement of child / parent in any act of indiscipline / disobedience / misbehavior during the course of availing the school bus services.





DATTA MEGHE WORLD ACADEMY

Sector 16, Airoli, Navi Mumbai 400708

+91 77000 88734 022 27790829/30

enquiry@dmworldacademy.edu.in

www.dmworldacademy.edu.in